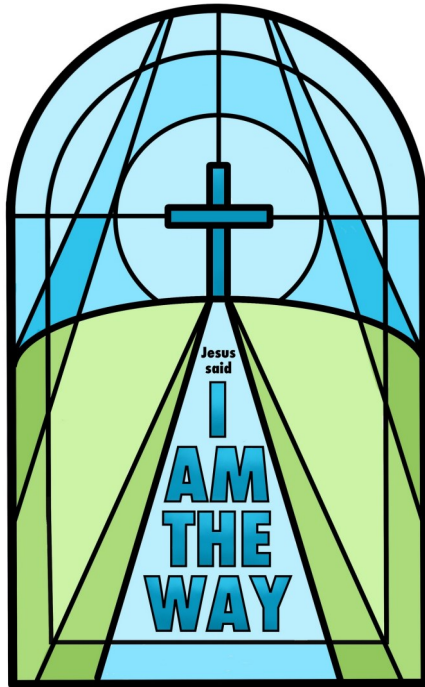


Takeley, Priors Green, Little Canfield, Molehill Green
Takeley Street, Bambers Green, Takeley Park

GRAPEVINE

The Monthly Magazine for
Church and Community

Church of England | Diocese of Chelmsford
Parish of Takeley with Little Canfield



April 2024

Published by: PCC of Takeley with Little Canfield (TLC Church)

Grapevine is also available as a pdf file on our website:

www.tlcchurch.co.uk

EDITOR: Barbara Mascetti 01279 871 606, 12 Chestnut Way, Takeley, CM22 6RW

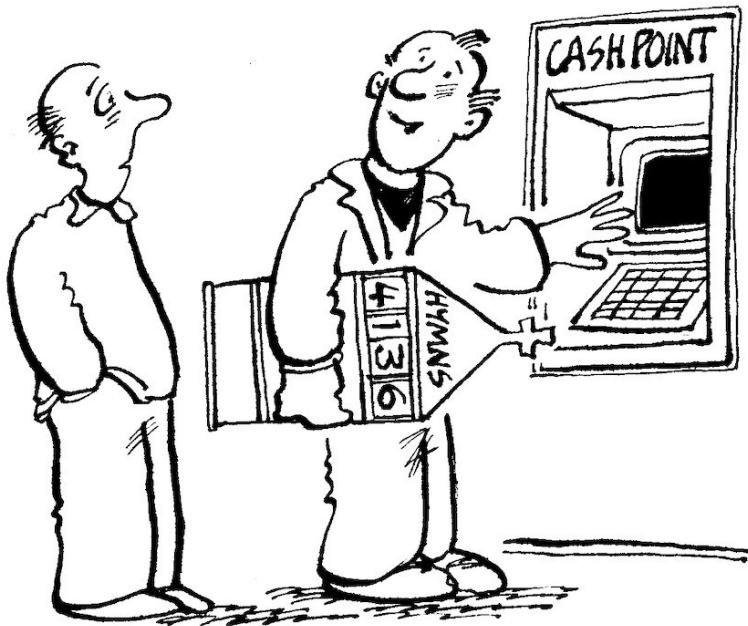
Please submit articles for inclusion to: grapevine@tlchurch.co.uk

ADVERTISING: Please submit adverts for inclusion to Pat: adverts@tlchurch.co.uk

Adverts and articles should be sent as a Word document or JPEG or PNG file, not PDF.

Published online 10 times a year.

The parish includes: Takeley, Priors Green, Little Canfield, Molehill Green, Takeley Street, Bambers Green & Takeley Park.



...between you and me, it's the only way I can remember my PIN number!

.....
JOIN US EACH
SUNDAY
TOGETHER IN CHURCH
.....

April services
in Takeley and Little Canfield
churches

- 7** Morning prayer, L. Canfield
- 14** Holy Communion, Takeley
- 21** Holy Communion, L. Canfield
- 28** Family Service, Takeley

APRIL
2024



9:30AM

IONA

by Revd. Colin Fairweather

In the week after Easter – which is very possibly when you will be reading these words – I will be on holiday. The last holiday I had was ten years ago, so I think I am due one.

I will be going to the island of Iona, on the west coast of Scotland, which is possibly my favourite place in the world, after Takeley and Little Canfield. (At only three square miles, it's smaller than the combined area of the two villages.)

St Columba came over to Iona in 563 to establish an abbey, which still stands. There has always been religious community on the island. The



Iona Community, which was founded in 1938 and still going strong, has members from across the world.

Celtic spirituality has a wonderful notion of a 'thin space', where the veil between the material and the spiritual realms is thin. I never really understood the concept, until I first visited the island in about 2011. It's difficult to describe, but holiness just hangs in the air – it is sensory and palpable, the result of centuries of constant prayer.

Iona is actually quite touristy, and throughout the day, backpacked hordes arrive on the ferry from Fionnphort on the west coast of Mull. The island is not without its bustle, particularly in the area around the Abbey.

The last ferry is at about six o'clock, after which the atmosphere of the island changes significantly. There are no more comings and goings – if you are on Iona at 6:05pm, you are there for the night. As the Hebridean evening descends, the holy stillness of the place really comes into its own.

I'll be staying at the Arygll Arms Hotel rather than with a community, so I won't technically be on retreat. The appeal of going is almost entirely spiritual, however. I will be going to the several daily services in the Abbey, and spending the rest of my time on a secluded beach somewhere, reading a book. Introvert heaven!

I'll see you all no doubt on the other side. In the meantime, enjoy the lighter evenings, and have a blessed Eastertide. Christ is risen indeed, alleluia, alleluia!

Rev Colin Fairweather



April 2024



TLC Church services and other events from April 2024 onwards

Saturday 6th April 2024, 10am: Prayer Share at All Saints Church, Little Canfield CM6 1SU

Sunday 7th April, 9:30am: Morning Prayer at All Saints Church, Little Canfield CM6 1SU

Saturday 13th April, 9am: Informal Morning Prayer at Holy Trinity Church, Takeley CM22 6QL

Sunday 14th April, 9:30am, Holy Communion at Holy Trinity Church, Takeley CM22 6QL

Saturday 20th April, 9:30 am: Deanery Walk for April. Meet at St Mary's Church, Church Street, Church End, Great Dunmow CM6 2AE at 09: 30 am. (There will be no service of Informal Morning Prayer in Holy Trinity that morning.)



Sunday 21st April, 9:30am: Holy Communion at All Saints Church, Little Canfield CM6 1SU

Saturday 27th April, 9am: Informal Morning Prayer at Holy Trinity Church, Takeley CM22 6QL



Sunday 28th April, 9:30am, Family Service at Holy Trinity Church, Takeley CM22 6QL

There is a complete list of events, both church-related and not, towards the back of this issue of the Grapevine. Further information can be found on the website of the Five Parishes:

[The Anglican churches of Stansted, Birchanger, Farnham, Takeley and Little Canfield | \(thefivechurches.co.uk\)](http://thefivechurches.co.uk)

All Saints Church in Little Canfield has long been open during the day for personal private prayer . We have now also started to open Holy Trinity Church in Takeley during the hours of 9am-5pm. Lavatories are available at both churches.



All Saints, Little Canfield, Postcode:
CM6 1SU. What3words for the All
Saints car park:
hardly.headless.improves

Holy Trinity, Takeley, Postcode:
CM22 6QL. What3words for the Holy
Trinity car park:
optimally.goggles.invite



FRIENDLY & RELIABLE SERVICE

LOCAL COMPANY

FULLY INSURED

GAS FIRES | BOILERS | CYLINDERS | TANKS

GAS BOILER SERVICING & REPAIRS

COMPLETE BATHROOM REFURBISHMENT

KITCHEN INSTALLATIONS

OIL & LPG BOILERS AND FIRES

INSTALLATIONS | BREAKDOWNS | SERVICING

ALL PLUMBING & HEATING WORK



FREE ESTIMATES
M 07981 982 864
T 01279 871 818



E info@domsheating.co.uk
w domsheatingandplumbing.co.uk



Takeley Ladies' Circle - Upcoming Events

Takeley Ladies Circle meet fortnightly on Tuesday afternoons at the Old School House, Takeley, CM22 6SB from 2-4pm. Times for day trips and meals will be announced nearer the time.

On 9th April the Ladies Circle celebrates 60 years. We are celebrating with a trip to the Carriages Tea Rooms, near Huntingdon in Cambridgeshire. We are honoured to still have two founder members, Barbara Aviet & Phyllis Altham, taking part and still attending meetings, as well as being chairwoman and treasurer.

16th April We meet for tea and a chat.

30th April We have a film on show.

May 14th A talk on the history of Easton Lodge

May 28th Bingo

June 11th We play bowls at the Takeley Sports & Social Club

June 25th We have a talk about medical detection dogs.

July 9th "My life with flowers" - talk and demonstration.

New members always welcome to come to the meetings on the above dates at the Old School House, Takeley.

Our meetings and talks have a £2 charge for members, £3 for non-members. Tea or coffee and cake or biscuits are supplied.

News from Brian Hockley

Rodings Friendship Club

On **THURSDAY April 25th** it is the club's first outing of the summer, when the club travel to **The Burtey Fen Collection**, stopping at the Spalding Shopping Village for lunch, and then to The Burtey Fen Collection for the afternoon concert - going back in time to the era of Elvis, the Beatles, Dusty Springfield etc., plus tea, coffee and biscuits during the interval. Note that, unusually, this trip is on a Thursday rather than on a Wednesday.

High Easter Village Hall

On **Saturday May 11th** it's live music night at **High Easter Village Hall**, with another performance by excellent singer **Talia and her Electric Accordion**. This event is for the High Easter Village Hall & The Monday Munters Funds. A great night is promised, where you can sit and listen or dance the night away from 7.30pm to 10.30pm, with a couple of breaks in between. The bar will be open but bring your own food or nibbles. Tickets will be £10.00 and are available from organiser Brian Hockley on 01279 871181 or email hockley261@btinternet.com. This event is for the High Easter Village Hall funds.

Rodings Showtime - Panto change

There has been a change of name in this year's Cliffs Pavilion Panto at Southend. It will now be **Jack and the Beanstalk**, starring TV Star Rylan as Jack. I will keep you updated on the rest of the cast ASAP. Everything else will stay the same. Date: **Sunday 15th December**, 5pm performance. Price: £53.00 per head. Book your seats with Brian Hockley by means of a £20.00 deposit ASAP, and there will be nothing more to pay until the end of July. Contact Brian on 01279871181 or email hockley261@btinternet.com.

Brian Hockley

**Saturday
11th May
2024**

Live Music With



High Easter Village Hall

**7.30pm Start
10.30pm Finish**



Prepare to reminisce about the **Music of the 1940s and 1950s**, & learn more about its origins and development, when Howard Slater visits **Dunmow u3a** on Wednesday 24th April

Many musical styles flourished and combined in the 1940s and 1950s, most likely because of the influence of the radio had in creating a mass market for music. World War II caused great social upheaval, and the music of this period shows the effects of that upheaval.

In the early 1940s, bebop emerged, It helped to shift jazz from danceable popular music towards swing music big bands such as Glen Miller, Tommy Dorsey, here in UK, Ambrose, Joe Loss to name a few. The swing era lasted until the mid-1940s. When the big bands struggled to keep going during World War II, a shift was happening in jazz in favour of smaller groups. Some swing era musicians later found popularity in a new kind of music, called "rhythm and blues", that would evolve into rock and roll in the 1950s.



Wednesday 24th April - 1.30pm for 2pm start at Foakes Hall, Dunmow CM6 1DG

These monthly meetings are free and **open to non-members** as well as members, so do come along and see for yourself.

Dunmow u3a is part of a UK-wide movement of locally-run interest groups that provide a wide range of opportunities to come together to learn for fun.

It is aimed at adults in the CM6 area who are no longer in full time employment and have an interest in all things new: hobbies, challenges, sports or just making new friends.

"I joined the u3a to keep active in my retirement, and to pursue activities that I enjoy, with like-minded people."

To find out more, contact us on 07385 879846 or go to Du3a's website <https://u3asites.org.uk/dunmow/welcome>

Registered charity number: 1168310

ZARAJANE FERRIER

GRAPHIC DESIGN & BRANDING SERVICES

NEED PROMOTIONAL OR BRANDING MATERIAL FOR YOUR BUSINESS? LOOK NO FURTHER. AS A GRAPHIC DESIGNER AND BRANDING SPECIALIST, I CAN HELP TAKE YOUR BUSINESS VENTURE TO THE NEXT LEVEL.

DESIGN SERVICES INCLUDE:

- LOGOS & BUSINESS CARDS
- POSTERS & FLIERS
- LEAFLETS & BROCHURES
- BANNERS & ADVERTISEMENTS
- INVITATIONS & LETTERHEADS
- PACKAGING & DISPLAYS

FOR A FREE QUOTATION, CONTACT ME TODAY THROUGH THE DETAILS BELOW, OR FIND ME ON FACEBOOK AT FERRIER DESIGN.

TEL. 07894 822237

EMAIL. ZARAJANEFERRIER@HOTMAIL.CO.UK



The Hundred Parishes Society

www.hundredparishes.org.uk

The Bardfield Artists: Eric Ravilious and Edward Bawden

The Society's logo is a wood-cut by the late Eric Ravilious.



Eric Ravilious's woodcut for the Hundred Parishes Society

Eric Ravilious and Edward Bawden were both Royal College of Art students when, on a cycling holiday, they happened upon Great Bardfield in Essex. There, they rented Brick House, starting a fascinating period for the village.

Over the next two decades, numerous artists came to live there; they became known as The Bardfield Artists.



Edward Bawden's logo at Tottenham Hale Station.

In 1932 Bawden married fellow student Charlotte Epton, a potter, and his father bought Brick House as a wedding present for

them. In the same year Ravilious married Tirzah Garwood, an artist and engraver, and they lodged for a while with the Bawdens at Brick House.

Bawden's work can be seen today on three Victoria Line stations - Victoria, Tottenham Hale and Highbury & Islington - for which he designed the logos.



Edward Bawden's logo for Highbury and Islington station.

Another artist, John Aldridge, bought Place House in Great Bardfield in 1933 and soon became friends with Bawden. They produced Bardfield Wallpaper together for the company Cole & Sons to distribute.



In 1952, painter Stanley Clifford-Smith moved into Bucks House and later to the Old Bakehouse. He was very involved in Open House exhibitions that were held in the 1950s when the public could view and buy art in the studios and homes where it had been created.

Marianne Straub, a textile designer, moved to Great Bardfield in 1953, buying Trinity Cottage. She was the senior designer for Warner & Sons of Braintree.

Other Bardfield Artists included Kenneth Rowntree, Michael Rothenstein and Walter Hoyle.



A good selection of the Bardfield Artists' work can be seen at Fry Art Gallery in Saffron Walden – it reopens on April 7th – see <https://fryartgallery.org/> for opening hours. In Great Bardfield, books and other information about the artists can be purchased at the new premises of Between The Lines bookshop.

Above: Brick House, Great Bardfield. Below: Place House, Great Bardfield.

Ken McDonald, Secretary

News from Councillor Susan Barker

Dear Takeley and Little Canfield Residents,

Spring is with us, but the wet few months of the year has caused considerable damage to our roads. As always, the time to mend potholes and other defects starts now.

Some roads through Priors Green are scheduled for resurfacing in March/April, which will make for a smoother ride. Highways is also trialling a new initiative where I can nominate residential roads and pavement for repair, so if you are aware of any, please let me know. I already have Roseacres in my sights. I was pleased to meet with the Head Teacher of Takeley Primary School to discuss parking outside the school gates and have funded some signs which seem to be helping in stopping inappropriate parking. The vehicles parking nearby while the Weston Homes development on the B1256 is under way are not helping the situation.

I was upset to see that the 40-house development at Jacks Lane was allowed by the inspector, and also plans for homes south of the Flich Way and west of Station Road.

Essex has set its Budget for the coming year and the major cost pressures this year are increases in the number of Looked After Children, an increase in home-to-school transport costs from £35m to £50m, a 9.8% increase in the National Living Wage, and a 5.1% increase in staff pay.

If there are any issues that I can assist with, please do get in touch.

Susan

County Councillor for Great Dunmow division
District Councillor High Easter and the Rodings
Chairman Essex Pension Fund

St Clare Hospice runs Bereavement Cafés in Dunmow (right) and Stansted (below).



Bereavement CAFE

St Clare Hospice

Meet and connect with others who understand

- ☀ Chat, share and support each other
- ☀ Free, informal café-style event
- 👤 Facilitated by trained volunteers
- 👤 Everyone is welcome

Where? Old Park Meadow Natural Burial Ground, Coppice Lane, North End, Nr Great Dunmow, CM6 3P

When? The third Wednesday of the month

Time? 10am - 11.30am

For more info, call our Bereavement Support Helpline on 01279 967670.



Bereavement CAFE

St Clare Hospice

Meet and connect with others who understand

- ☀ Chat, share and support each other
- ☀ Free, informal café-style event
- 👤 Facilitated by trained volunteers
- 👤 Everyone is welcome

Where? Crafton Green House, 72 Chapel Hill, Stansted, Essex, CM24 8AQ

When? The first Wednesday of the month

Time? 10am - 11.30am

For more info, call our Bereavement Support Helpline on 01279 967670.

There is also a Bereavement Café in Saffron Walden.

Join our Parochial Church Council and help shape the future of our churches!

Our Church PCC consists of:

Our ministry team: Revd Colin, Revd Helen, and Lay Minister Hugh Mascetti,

Our Church Wardens: David Daykin and Will Sadler,

Our Deanery Synod Reps: Jackie Cheetham and Sue Gowlett (who also holds the positions of Treasurer and Electoral Roll Officer), and

Our Elected Members: Jackie Cheetham, Amanda Evans, Lyn FitzGibbon and Sue Sadler (who also holds the position of Safeguarding Officer).

We currently have two vacancies on the PCC. Would you like to join and help shape the future of our churches? Contact Lisa on admin@tlcchurch.co.uk if you are interested, or speak to one of the PCC members to find out more.



www.Langthorns.com . 01371 872611



Spring is in full swing with gardens full of excitement and promise, so give yourself a well deserved treat this Easter break by visiting **Langthorns**

 **Langthorns** plantery
We live plants; we love plants

Open Tuesday - Sunday 9am - 5pm
(Bank Holiday opening will vary - see our website for details)

Share our passion for plants 

Takeley Cricket Club

Takeley Cricket Club are in the process of restructuring our Youth Cricket for the coming season. This includes running our junior **cricket practice** on a **Thursday evening** from early May. We have Romesh Pakstun coaching again, and we plan to have under 13yr old team playing in the North West Essex Cup.

We are also wanting any possible Cricketers of any age, or would-be players for our **Saturday league teams**, or just to play in the friendly Sunday side.

New players to our friendly socially based club are always very welcome. Please contact our Chairman, Tim Connolly, for any further information by email at timconnolly2023@gmail.com or telephone 07770 551263.



Environmental Action

One of the key Rotary aims is about protecting our environment. In Takeley, our main action has been regular litter picks, which we are hoping will also engage other members of the community. Our last litter pick was on 8th March when we removed a dozen bags of litter from the Priors Green area.



The Wilderness Foundation

This is an organisation devoted to helping children, teens and adults' mental health through their programmes of education, nature-based therapy and mentoring. Their Wilderness site is just off the A130 between Braintree and Chelmsford. Recently they became corporate members of Essex Rotary; and Rotarians help maintain and preserve their natural environment.

So, on Friday 8th March after the litter pick, some of us went to help; collecting tree guards from the hundreds of newly planted trees which have grown big enough not to need them any longer. Morning activities included creating raised beds for plants.

For further information see: <https://wildernessfoundation.org.uk>

There will be another Rotary volunteer day on 18th May.

Other future events

Quiz Night April 20th @ Little Canfield Church 6.30 for 7pm

Quizzers are invited to come along and test your quizzing skills. Refreshments will be provided, but BYO drinks and nibbles at All Saints Church, Little Canfield **CM6 1SU**. What3Words ///hardly.headless.improves

Takeley and Little Canfield Open Gardens

23rd May 12-5pm

We are planning to run our 2nd Open Gardens event this year and are currently asking people to volunteer to open their gardens for us and to add to our lovely garden volunteers from last year. (see attached poster). Anyone who volunteers gets a visit from a Rotarian to explain the process, so an initial enquiry will be followed up during April and May.

To contact us: rotaryintakeley@gmail.com



**2024 Takeley and
Little Canfield
Open Gardens**

Do you have a garden?

We invite you to volunteer to open **your** garden.

Date: Sunday June 23rd 12-5 p.m.



**We need your garden.
Please volunteer!**

Contact verseyjennifer@gmail.com
or phone 07984 619348 for further
information

For further details see:
<https://www.rotary-ribi.org/clubs/homepage.php?ClubID=1430>

COLORCRAFT

at

THE HOPPIT

Now the Art & Craft Place
in Bangers Green

I still have lots of things you may need -
to sew, craft, paint, model, school projects etc.

I still stock DMC threads,
Appletons Embroidery wools,
Fabri(Aida), Felt, Fat quarters,
Ribbons, Buttons,
Paints, Card, Brushes,
Scenics, Plaster.

Now @ Bangers Green, Takeley, CM22 6PE
By Appointment.
Phone 07397964545

I may just have what you are looking for.
(web site in progress)

THE GARDENS OF EASTON LODGE

News from the Gardens of Easton Lodge —April 2024

April is the start of the main season at the Gardens – we open weekly on Thursdays, starting on 4 April, and our first main season Open Day is on 21 April.



Through March we hope the weather will have allowed us to get planting. A range of new trees for the Glade, including *Cercidiphyllum* (Katsura) and *Acers*, will have been OK with going into wet soil, but elsewhere we hope the ground will have dried out so that grass returns to the mud patches created by the standing water in February. Our volunteers will have worked to extend the Japanese gar-

den, and planted more shrubs and small conifers into the new Warwick border (behind the croquet lawn). In the kitchen garden much of the early sowings of peas and beans will have been in pots, so by April we can transfer plants and hopefully avoid them being eaten by all the wildlife in the garden - the mice, slugs, moles and pigeons to name a few!

How to find the Gardens of Easton Lodge

For SATNAV use postcode: **CM6 2BB**

By car: You will find the Gardens of Easton Lodge on Park Road, Little Easton, about 3/4 mile on past Little Easton church.

The What3Words of the entrance to our car park is **Stocky.Bulletins.Opponent**

The joys of April should be the spring flowers and blossom. After working to clear some woodland, we hope the bluebells will be able to come through more strongly and there may be the tail end of the daffodils, cowslips and violets. In the Italian garden the tulips should be providing bright colours to the fresh greens of spring growth. In the kitchen garden there will be a succession of blossom. The first blossom is the nectarines and peaches in March, followed by plum and cherries. By April it should be pears and apples. In the Glade there will be blossom on the flowering cherries and hawthorn.

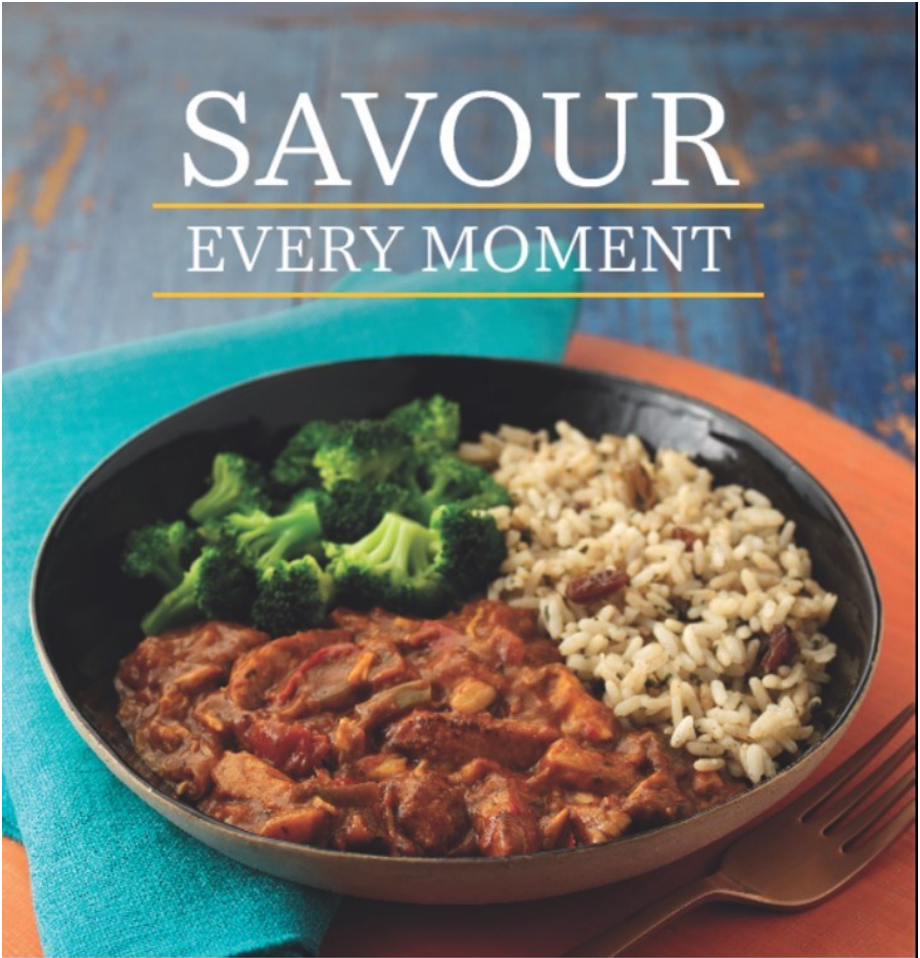
The Gardens are open from **11.00 to 3.00 on Thursdays**, with payment on the Gate. Our volunteers provide hot and cold drinks and homemade cakes. For the **Open Day on 21 April, 11.00-5.00pm** there will be folk and acoustic music from Karen and Tony, children's craft and trail and the usual fayre for a Sunday: hot bacon rolls, cheese or hummus rolls, homemade soup and cakes. For more information, go to www.eastonlodge.co.uk/whats-on

Jill Goldsmith, March 2024

THE GARDENS OF
EASTON LODGE

SAVOUR

EVERY MOMENT



With our delicious frozen meals and desserts, prepared by award-winning chefs and delivered free by your local team, you've more time to enjoy doing the things you love.

For your free brochure visit wiltshirefarmfoods.com or call

OVER 300 DELICIOUS DISHES

FREE FRIENDLY DELIVERY

TRUSTED LOCAL SERVICE

WILTSHIRE

EST. FARM 1991

FOODS



April 2024 Shopping List and Update

We would like to thank you for your continued support. With the cost of living crisis and rising food prices any donations made are gratefully received. We also know and see how much your donations mean to those who find themselves in food crisis.

We have distributed over 2,600 parcels to those in need so far this year and we find ourselves in the unfortunate position that as fast as the donations are coming in we are giving them out. Your support is vital.

Our Community Outreach Officer is working hard to build links with local communities so that we can help those who are unable to reach a centre for example those with mobility issues. This outreach work is for anyone who finds that they need support in both towns and rural areas. If you would like more information about this service please email outreach@braintreearea.foodbank.org.uk or telephone 01376 330694 and ask to speak to Sarah.

Food items

- Tinned cold meat i.e. Spam
- Tinned hot meat i.e. Stews
- Jam
- Long life sponge puddings
- Rice
- Tinned rice pudding

Non-food items

- Cat/dog food
- Shampoo
- Deodorant
- Gluten free alternatives
- Conditioner
-

*** Please note: We ask for small packs** as larger packs do not fit in our boxes making it difficult for our clients to carry home. Also, we are unable (for hygiene reasons) to split large size or catering packs.

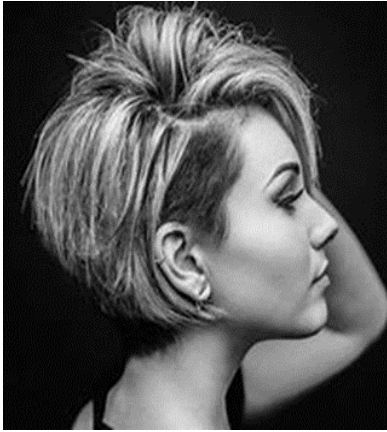
We are always pleased to accept monetary donations if you prefer or Supermarket Gift Cards.

Please Note: We follow the standards set by the Food Standards Agency. We can only accept donations of unopened and undamaged goods that are still well within their "use by" date (no less than six months if possible). Items which do not meet these requirements cannot be used and your donation may be wasted.

T: 01376330694

E: info@braintreearea.foodbank.org.uk

W: www.braintreearea.foodbank.org.uk/give-help/donate-food



Options Hair Design

2 Ambrose Corner

Elsenham

01279 812665

www.optionssalon.co.uk

At Options Hair Design we work hard to provide the very best of care to our clients.

From the moment you enter our salon our aim is for you to feel the most confident and beautiful version of yourself.

Our dedicated and talented team of professionals use the very best and innovative, organic products to achieve the look that you want for your hair. We work with you to achieve this as we believe that confidence comes from a hairstyle that you are happy with.

Our team of 5 stylists each bring with them a wealth of experience, and each display their own creativity whether in colouring, cutting, styling, or finishing.

Our ethos is that the salon experience we provide ensures you leave feeling relaxed, pampered and confident.

**TAKELEY
CHIROPRACTIC**



Injuries treated:

- Neck pain
- Back pain
- Headaches / migraines
- Joint & muscle problems
- Sciatica
- Sports injuries

Treatments include:

- Joint manipulation / mobilisation
- Soft tissue work
- Medical acupuncture
- Therapeutic ultrasound
- Rehabilitation & education
- Deep tissue massage and other massage techniques

[Book a consultation now](#)

01279 944 811

takeleychiropractic.co.uk



Café Crafting

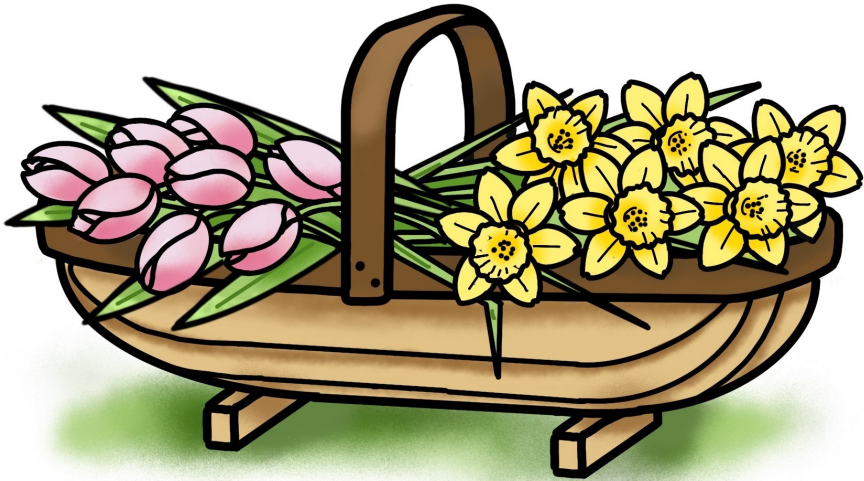
Do you knit? Crochet? Draw? Sew? Embroider?
Why not bring along your latest project to Takeley Old
School Community Café and enjoy a time of crafting
with others.

When: Every 1st and 3rd Friday

Time: 9:30am to noon

Come and join any time during the morning.

There is no charge.



Binwash

We clean
your wheelie bins!

Commercial & Domestic

- . Monthly cleaning from just £4.50!
- . Professional equipment
- . Same day as waste collection



01799 52 98 99

www.binwash-uk.com

enquiries@binwash-uk.com



Is your business getting the online success it deserves?

If you're lacking confidence in your website, if you're feeling left behind, if your digital assets are outdated, or if you're unsure whether your website is properly supporting you, [click here](#) to get your **FREE** copy of 'The 5 keys to High Converting Websites'.

Here we pull together the key ingredients for your success from over 20 years of building high performance websites for enterprises from the start-up entrepreneur to companies turning over £1-10 million.

Now, more than ever it's imperative that all businesses, from the solopreneur to the big high street brands, embrace the advancing online digital wave so they don't get left behind.

FREE website performance review

from your local web development team

Available to the first five businesses to email simon@toucanweb.co.uk with subject **FREE REVIEW**



Toucan Internet

Bespoke Web Development & Process Automation



01279 871 694
toucanweb.co.uk

Takeley Social & Sports Club



Dunmow Road, Brewers End, Takeley CM22 6QJ
(Behind the Silver Jubilee Hall)

**Will be holding a
Coffee Morning
Saturday 20th April
10.00 am – 12.00pm**

Why not come along for coffee and cake.....



**There will also be the following
stalls: Bric-a-Brac, books, cakes,
children's clothes and toys and
Raffle**

Money raised will go towards the refurbishment of the club.

TAKELEY SOCIAL AND SPORTS CLUB
Dunmow Rd Brewers End Takeley CM22 6QJ
(behind The Silver Jubilee Hall)

ENTERTAINMENT NIGHTS

8.30pm Start

Non-members welcome entry fee £5.00pp

April

Saturday 6th – Singer

Terry Lee Travis

performing rock, pop, country and classic hits

Saturday 13th - Living the Dream

**a 5-piece band performing hits from the 50's,
60's,70's and country classics**

Saturday 20th – Singer and guitarist

Ian Jordan

Saturday 27th - Family Night with

Solo Disco

6.30pm start

Non-members £5 per family



@Lazaplumbingand heatingmerchants

Laza Plumbing & Heating Merchants Ltd.

0208 443 3264 / 0208 443 3265

**BOILERS, BATHROOMS
RADIATORS & FITTINGS**

Email: lazaltd@btconnect.com



**FREE DELIVERY IN
DUNMOW
AND SURROUNDING AREAS**



GRUNDFOS 

 **John Guest**

Honeywell

PolyPlumb

Traditional push fit plumbing

ideal

The CONNECT 120 fund

The Connect 120 Fund – enabling community projects in the Stansted area

Connect 120 started as a collaborative venture between Stansted Airport and the churches along the A120 corridor. The purpose was to enable churches to facilitate mission in the local area, with a particular focus on schools and young people.

After lockdown, Connect 120 is now back in a new incarnation. The Connect 120 Fund has been set up by the churches of Stansted, Birchanger, Farnham, Takeley and Little Canfield, working together with priest-in-charge Rev Colin Fairweather.

The Fund seeks to support community-based projects, which may be social, educational, creative or environmental in nature – basically, anything that blesses our villages!

Applications will be considered by a discernment group, which will ask three fundamental questions of any proposed project:

- How is it consistent with Christian values?

The Hair & Beauty Barn
High Cross Lane, Lt Canfield

Cut & Blow Dry £20

Foils, Full Head Tint from £40

Perms inc. trim £49

Gel Nails, OPI, Shellac & Gelish £15

Manicures, Pedicures, Brow & Lash Tinting

Waxing from £6

St. Tropez Spray Tan £15

Lash Lift, Tint & Wax £25

Call To Book Your Appointment NOW

07880501549

CRB Checked mum of 3

Mobile Service Still Offered



- How will it promote personal, social, emotional, spiritual or intellectual flourishing?
- What legacy will it have?

The 'Christian values' criterion has a broad remit, and does not mean that projects have to be explicitly faith-based. Justice, compassion, creativity, healing and well-being are all Christian values, as is the desire simply to make community life better.

The core purpose of Connect 120 fund is to allocate funds wisely in order to bless our communities. So if you are involved in community life and have ideas about how to enrich it, we would love to hear from you.

More information and an application form is available at www.thefivechurches.co.uk/the-connect-120-fund/. For inquiries, please email Rev Colin at revdrcolinfairweather@gmail.com.



PRAYER AND FELLOWSHIP ON SATURDAY MORNINGS

We normally meet at **9:00 a.m.** on Saturdays for **Morning Prayer** in **Holy Trinity** church, Takeley. The service lasts about half an hour.

However, on the **first** Saturday of each month we go to **All Saints** church, Little Canfield, for an informal "**Prayer Share**" at **10:00 a.m.** There will be refreshments and provision for children.

There are also some Saturdays when everybody goes elsewhere, usually for one of the monthly **Deanery Walks**. These walks are a great chance to visit other churches in our area and meet people from all over the Deanery. Each walk starts by meeting at 9:30 a.m. (note later start time than previously) at the church hosting that month's walk, then there is a walk lasting a little over an hour, then the group returns to the church for refreshments and a short act of worship lasting about ten minutes. The **Deanery Walks for 2024** are listed on the next few pages.



DUNMOW AND STANSTED DEANERY WALKS 2024

Together on the Way ... Sharing Stories

It is ten years since the first of our deanery pilgrimage walks in 2014 which began as we celebrated the 100th anniversary of the formation of the Chelmsford Diocese in 1914. In the first year we journeyed together, walking and talking to all 28 churches in the deanery, and since then 8/9 churches each year as we moved to monthly walks.

Our theme this year is 'sharing stories', Jesus was the master storyteller as he walked with his disciples or spoke to the crowd round him. Over the last 10 years we have formed friendships and exchanged stories, we have listened to others tell us significant stories about the places we have walked, and we have shared stories about our churches, their history, memorials and the faithful communities who have worshipped there.

The symbol for this year's walks is the scallop shell one of the most iconic symbols of the Camino de Santiago. Together with a yellow arrow it is still used to guide pilgrims to Santiago de Compostela. It is said a **pilgrimage is a journey to a significant place, made with the intention of encountering God. As we walk together may we encounter God in the landscape, in our companions and in the places we visit, and may our faith be inspired by the stories we share.**

The calendar of walks is on the back of this leaflet, please note this year we will be **starting at the later time of 9.30am** at the designated church, we will walk for one hour before returning to the church at 10.30am for refreshments, finishing with worship together in a short service. Please join us and bring friends and dogs, all are welcome. There is a contact for each walk if you need more details. This [Continued after advertisement ▶](#)



Elevate Solar

**Noticed an increase
in your energy bills?**

TAKE BACK CONTROL WITH SOLAR ENERGY

SAVE
£250
WITH THIS
LEAFLET

CURRENTLY VAT FREE

BOOK YOUR FREE CONSULTATION
www.elevatesolar.co.uk
01371 875222



year there will be a deanery service on Sunday 20th October to mark the end of our walks.

Following the walk we gather for a short service, including praise and thanksgiving, a Bible reading, intercessions and closing prayers.

Praise – a hymn, song, or the following canticle may be used.

Bless the Lord all you works of the Lord:

sing his praise and exalt him for ever.

Bless the Lord you heavens:

sing his praise and exalt him for ever.

Bless the Lord you angels of the Lord:

sing his praise and exalt him for ever.

Bless the Lord all people on earth:

sing his praise and exalt him for ever.

Bless the Father, the Son and the Holy Spirit:

sing his praise and exalt him for ever.



Bible reading

They said to each other, “Were not our hearts burning within us while he was talking to us on the road, while he was opening the scriptures to us?”

Luke 24: 32

Other possible readings might be Bible stories linked to our communities or church buildings (perhaps depicted in our windows, connected with patron saints, or the story of our church community);

or a reading on the theme of pilgrimage or sharing stories.

Genesis 12:1-3; Genesis 28:10-17; Exodus 13:17-22; Deuteronomy 6:6-7; Psalm 145: 1-7; Luke 2:41-49; Luke 24:13–29; Hebrews 11:8-10

Prayers of thanksgiving and intercession

Which might include the following:

Thanksgiving for stories that inspire and encourage us in faith
Prayers for those with whom we travel on the way
Prayers for those who are journeying through difficult times

A prayer for the journey

Journeying with you, Creator God,
is to journey in your world,
full of marvels and such beauty.
To glimpse eternity in sky and sea,
to feel the earth and rock beneath my feet.



Journeying with you, brother Jesus,
is to journey with your friends.
To meet and travel a while together,
then part at the crossroads,
knowing you are with us all.



Journeying with you, Holy Spirit,
is to journey with the wind.
To move to your wild music
then try to sing your song
so others may hear.

*Chris Polhill © The Iona Community
from Gathered & Scattered, published by Wild Goose Publications*

We end by saying together **The Lord's Prayer and The Grace**

A pilgrimage prayer to use at the beginning of each walk:

Bless to us, O God, the earth beneath our feet. Bless to us, O God,
the path whereon we go. Bless to us, O God, the people whom we
meet. Walk with us, O God, as we walk together on the way. Amen.



DATE of Deanery Walk:	CHURCH	CONTACT
16 th March	High Roding	BRIAN DENMAN b.denman.341@btinternet.com Tel: 07771 840057
20 th April	Great Dunmow	MARION TUTTLEBEE marion.tuttlebee@googlemail.com Tel: 07773 281286
18 th May	Birchanger	PAM LEE pam.mark2@btinternet.com Tel: 07702 171744
15 th June	Broxted	HUGH MASCETTI hmascetti@aol.com Tel: 07940 791446
20 th July	Beauchamp Roding	ROBERT PARMENTER r.p.parmenter@btinternet.com Tel: 01279 876219
17 th August	Stebbing	CLARE KANHARN Clare.kanharn@btinternet.com 01371 856222
21 st September	Great Saling	LYDIA BUCKNELL lydia.bucknell@btinternet.com
19 th October	Little Canfield	FLO GOWLETT sueblatches@outlook.com Tel: 07773 910080
Deanery Service 20 th October at 4.30pm	High Easter	ALLISON WARD admin@regc.org.uk Tel: 07960 796346



Roseacres Primary School

Roseacres, Takeley Bishop's Stortford. Herts, CM22 6QY.
01279879599

Recently, Y5 were extremely fortunate to have a visit from a STEM Ambassador, Amy who works for a construction firm, to set a 'Go Construct K'nex Challenge.'

The challenge was to build a model bulldozer with a movable blade and a unique feature of our own invention. We worked together to first design and then construct our models. After an hour, we were judged on how successfully we fulfilled the design brief and on our teamwork. Everyone had built a bulldozer and some had even managed to get their blades to move too! Sienna and Henry were chosen as the winners for Owl Class, as Amy was impressed with their cooperation during the task and the special feature of solar panels for their EV bulldozer. Sienna and Henry were awarded a medal and everyone was given a certificate for taking part. Their model will be entered into the regional final.



Oakley said, "I feel like today's challenge was hard but fun and it was also interesting to see what everyone else had made."



Ivy recounted, "I learnt about different mechanisms, when we made the blade, we made it so it moves." Daisy- Mai added, "I really enjoyed today's activity because we got to try different ways to make it work and to make our structure stable."

All the children had a brilliant morning and found the task challenging but fun.





Helen Rollason Cancer Charity Donation Days

The charity will accept clothing and accessories, toys, books, kitchen and homeware, ornaments, collectables, and any other valuable items. New or in good condition and preferably eBay saleable. They cannot take electrical items. You can drop-off your items at their Mid Essex Support Centre at: The Street, Hatfield Peverel, Essex, CM3 2EH (carparking at the rear of the building) **between 9am and 12pm** on the following Saturdays.

Saturday 11th May, Saturday 8th June, Saturday 13th July and Saturday 14th September.

For more information you can contact the fundraising team on 01245 380719.



ALL JOBS

BIG OR SMALL WE CAN DO THEM ALL

Property Maintenance,
Garden Care, Interior and Exterior
Refurbishments, Extensions

FREE QUOTE!

Contact
Elliot Treend

Tel: **01279 879028** Mob: **07939 536 340**
email: **info@alljobs.org.uk** web: **www.alljobs.org.uk**



Helen Rollason Cancer Charity

“Ride for Helen” – a charity cycle ride for all ages through the Essex countryside on 12th May 2024

Helen Rollason Cancer Charity will again be holding its popular “Ride For Helen” cycle rides through the lovely Essex countryside. Now in its 11th year, the event is on Sunday 12th May 2024 and registration is open on the charity’s website [here](https://www.helenrollason.org.uk/event/ride-for-helen-essex/).
<https://www.helenrollason.org.uk/event/ride-for-helen-essex/>



There are six cycling routes to suit all ages and capabilities: 6 miles, 15 miles, 30 miles, 50 miles, 65 miles and an exciting new 100 miles route for keen cyclists. All rides start and end in the grounds of The Crix, in Hatfield Peverel and they will be sign-posted and manned by volunteer marshals. There will be refreshment stops along the way and, in the grounds of The Crix, there will be entertainment, food and drink caterers, as well as first aid and mechanic support.

As well as enjoying a healthy day out in Essex, cyclists will be helping to raise funds to support local people living with cancer. If you don't wish to cycle,



you might like to help on the day as a volunteer. Contact the charity's fundraising team on 01245 380719 for information about volunteering.

Zoe Jay, Head of Fundraising said: "Each rider will be supporting those living with cancer. With 1 in 2 of us facing a cancer diagnosis in our lifetime, we are so grateful to everyone that attends events like this either as a participant or a volunteer. We need to ensure that we continue to host successful fundraising events to enable us to be here to offer our vital support in the future".

Chris Dale, Group Managing Director at Vesta, the headline sponsor for the event said:

"Sadly, many of our team and families have been affected by cancer so the Helen Rollason Cancer Charity is both a cause close to our hearts as well as our community. It means a lot to us to be able to do our bit in support and help raise more awareness. We're very proud to be part of it."

The logo for Helen Rollason Cancer Charity, featuring the text "Helen Rollason Cancer Charity" in white on a blue rounded rectangular background.

ASSOCIATED TAXIS

01279 655666

- ✓ 24 hour / 7 day service
- ✓ Public Liability Insurance
- ✓ Major Credit Cards Accepted
- ✓ Fully Licensed
- ✓ Computerised Booking & Despatch
- ✓ GPRS Controlled Vehicles



www.associatedtaxis.com

The Patient Plasterer

Very experienced tradesman

Reliable

Trustworthy

Clean

New work

Repairs

Plaster boarding

Coving and decorating

Nice result every time

Call Gary on **07782347254**

gary.edwards57@yahoo.co.uk



coop Funeral Directors

We are here when you need us **24/7**

Independent & Local Co-operative

Award Winning Customer Service

FREE Aftercare & Support Groups

FREE Online Memorials & Tributes

Inflation Proof Funeral Plans



White Hart Way, Great Dunmow CM6 1WX

 **01371 875542**



funerals.chelmsfordstar.coop Part of Chelmsford Star Co-operative Society Limited

Supporting our community

Food Bank centres are continuing to experience a significant increase in the number of people using the service. Regular donations can be made to Holy Trinity on service days and to All Saints at any time. All donations will continue to be transported by the team to the Food Bank.

If you or someone you know needs the help of the food bank, please encourage them to contact the Uttlesford Food Bank on 07531 436335

REGULAR EVENTS

Church services at All Saints Church, Little Canfield and Holy Trinity Church, Takeley usually take place at 09:30 on Sunday mornings, alternating between Holy Trinity and All Saints. See earlier for this month's pattern of services. There are additional services at special times of the year .

Morning Prayer - at Holy Trinity Church, Takeley, on Saturdays at 9 a.m. **except** for the first Saturday of the month when **Prayer Share** takes place at 10 a.m. at All Saints Church, Little Canfield or on those Saturday mornings when there is a Deanery Walk.

Canfield Coffee Pot - every Tuesday 10am—12 noon at All Saints Church, Little Canfield. There are also often cream teas at the church on Saturday afternoons, 3pm to 5pm.

Wednesday evening Craft Group—7pm on Wednesdays in Holy Trinity Church

Holy Trinity Churchyard Working Parties— Fridays, 09:30am—4pm in the churchyard or inside. Please bring tools.

Touchpoint—Thursdays at the Old School House Community Centre. 09:15—free hour of exercise, 10-11am: free food & hot drinks (eat in or take away)

The Old School House Community Café - every Thursday 11am till 2pm and every Friday 9am—1pm. The café is in the community centre on Dunmow Road, Takeley, CM22 6SB, What3words: ///sardine.hypnotist.post

The Men's Shed Tools and workspace available on Wednesdays and Thursdays from 10am to 4pm, same address as above.

Green Café—local food & more, at Church Lane, Little Canfield (next to the Men's Shed, see above).

"Face to Face" citizens' advice service at the Old School House Community Centre (address as for café above) every Thursdays and Fridays from

9.30am to 3.30 pm. Free private advice by video link. No technical knowledge required.

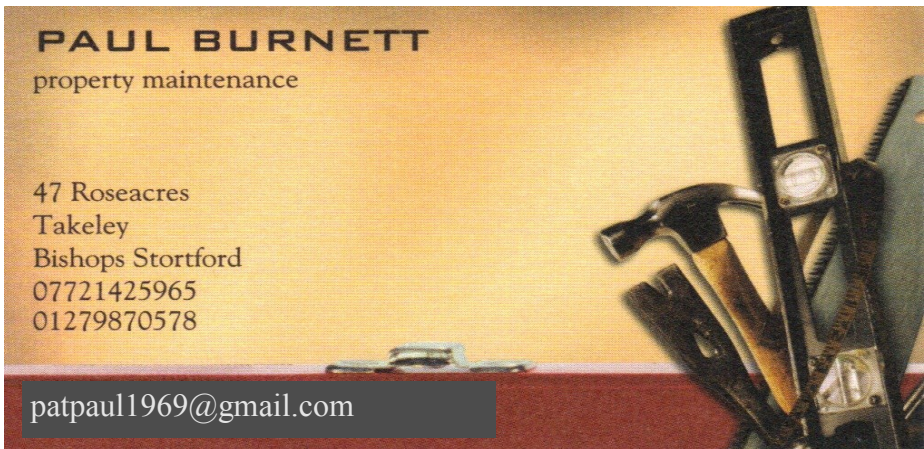
Saffron Walden Dementia Café - every Wednesday, 10am - 12 noon at Faircroft House, 37 Audley Road, Saffron Walden CB11 3HD. Call 01799 510525 for details.

Hatfield Broad Oak Women's Institute meets at 7:30 pm on the first Tuesday of the month in HBO Village Hall, Cage End, Hatfield Broad Oak CM22 7HT. Call 01245 382233 for details.

Buffy Playbus—every Tuesday from 11:30am to 12:45 at Honey Road, Little Canfield CM6 1FF and then at Beach Close, Takeley CM22 6RQ from 1:30pm to 2.45pm.

Meditation Group at the Lady Chapel at St John's Church, Stansted: 2pm on Tuesdays

Café Crafting—every first and third Friday of the month, 09:30-noon at the Takeley Old School Community Café, Dunmow Road, Takeley CM22 6SB



Little Canfield Village Hall has been refurbished – and is available for hire now!

The hall has been recently refurbished and is now available for Saturday or Sunday hirings. We now have a defibrillator fixed to the outside of the Hall. The rate is now £15 per hour with a refundable deposit of £60 if the Hall is left as found, clean and tidy.



Please apply to bookings.lcvh@yahoo.com.

ROB WHITWELL MOTOR ENGINEER LTD

ESTABLISHED 1993, OVER 40 YEARS EXPERIENCE

**SERVICING, REPAIRS
AIRCON, BRAKES/TYRES
EXHAUSTS, MOT'S ARRANGED**

*Unit 2 Hales Farm, High Cross Lane East
Little Canfield, Dunmow Essex
CM6 1TQ*

01371 872764

Online Morning Prayer

9:00am on Monday, Tuesday, Wednesday, Thursday and Saturday

here - <https://us04web.zoom.us/j/459441774>

You shouldn't need the Meeting ID but if you do, it is: 459 441 774

The password is: Stansted

The service of Morning Prayer is published on the Church of England

Website and you can find it here -

<https://www.churchofengland.org/prayer-and-worship/join-us-service-daily-prayer> Just follow the link to Morning Prayer

(Contemporary) for the day.

Meditation Group

The meditation group will continue to meet on

Tuesdays at 2.00pm in the Lady

Chapel at St John's Church, Stansted.

If you haven't tried it before, do come along and give it a go! Don't worry if you think it will be too hard- it's easier than you think and you will soon get the hang of it.

Silent prayer in company with others is a powerful experience.



The next Prior's Green Sunday Market will be held
10am—1pm on **Sunday 14th April 2024.**



Follow My Lead Stay n Play & Dog Training

Sparlings Farm, Felsted, CM6 3LB

Our doggie day care is fully licensed and run by an experienced and qualified caring team.

Purpose built, it includes a large indoor play area, home style kitchen and puppy area, an undercover outdoor arena and a large secure field.

Our dog training classes are led by qualified and experienced instructors.

We cover puppy, beginner & junior obedience and also offer 1:1 sessions for owners experiencing issues.

For more information, please contact us via WhatsApp

07536 172136

Alternatively, please visit us at

www.staynplaydoggiedaycare.co.uk or visit us on

Facebook - [followmylead.staynplay](https://www.facebook.com/followmylead.staynplay) or

[Followmyleaddogtrainingltd](https://www.facebook.com/followmyleaddogtrainingltd)

Are you unable to attend church in person? Use Zoom to go to church online!

Join the **09:30 Sunday service** at St John's, Stansted online by clicking [HERE](#) or go to:

<https://us04web.zoom.us/j/109066258>

Password: *Stansted*



IdealClimate

Creating the ideal climate **at home**

Air Conditioning, Heat Pump & Ventilation Services

Cost effective and energy efficient multi-purpose systems, that both **heat and cool** your home or home office

New home installations qualify for an official GOV.UK 15% VAT discount

01279 293433

enquiries@idealclimate.co.uk

www.idealclimate.co.uk

Proud members of

Checkatrade.com
Where reputation matters

Dunmow u3a is part of a UK-wide movement of locally-run interest groups that provide a wide range of opportunities to come together to learn for fun.

It is aimed at adults in the CM6 area who are no longer in full time employment and have an interest in all things new: hobbies, challenges, sports or just making new friends.

Our member-led interest groups include:

Art	General Crafts	Nature Walks
Book Clubs	Geology	Quilting & Stitching
Bridge	Golf	Science & Society
Canasta	Grow Your Own	Scrabble
Cycling	Italian	Table Tennis
Family History	Line Dancing	Walking
Flower Arranging	Luncheon Club	Whist
French	Mah Jong	Wine Appreciation
Garden	Music Appreciation	Zumba Gold

Recent outings include: Christmas shopping in Canterbury, Sutton Hoo, Matthew Bourne's "Sleeping Beauty", De Havilland Museum, Leeds Castle, British Museum (London), "The Mousetrap" and Hemingford Grey Manor. There really is something for everyone

To find out more, contact us on 07385 879846 or go to Du3a's website <https://u3asites.org.uk/dunmow/welcome>
Registered charity number: 1168310

u3a
learn, laugh, live





Morning Prayer

SATURDAY MORNINGS AT 9AM

at Holy Trinity Church, Takeley
except the 1st Saturday of the month when we have

10AM PRAYER SHARE
at All Saints Church, Little Canfield



Local Food (& More) Cooperative Ltd



Little Canfield Men's Shed

Blatches Barn, Church Lane,
Little Canfield, Dunmow CM6 1SU



Community Garden Project



We are planning to develop our garden area and polytunnel to provide a community garden facility where members can grow plants and vegetable produce for themselves and the community.

We need members/volunteers who are prepared to dig, plant and maintain the garden and polytunnel, this provides an opportunity enjoy the pleasures of gardening and socialise with other members as well as sharing the produce.

No skills or green fingers are necessary although gardening experience will be welcomed.

Anyone interested in joining this project please contact:
Geoff at Geoffglobal65@gmail.com

Church Finances



Even as we re-open our church buildings, the lockdown and its aftermath has had a really detrimental effect on church income. The absence of collections and other donations means that we are currently losing out on about £200 per week. Additionally,

most of our planned fund-raising events during the pandemic had to be cancelled, a loss from which we still have not yet recovered.

Even though worship things are not normal, most of the bills continue at the same rate as before. Our largest outgoing is the Parish Share which we pay to the diocese in order to pay the clergy, and we have had to significantly reduce our contribution to this. Next largest is the cost of insuring our two buildings.

If you come to a church service and would like to help us by making a donation to church funds, we can now accept card payments.

If you would like to help us by making a donation to church funds, please go to our website: www.tlcchurch.co.uk, where you can make an online donation.

Alternatively, if you would like to contribute regularly, please donate either by direct debit or standing order. Please email our Treasurer at treasurer@tlcchurch.co.uk

Contributing to TLC Church by Debit Card

We use an organisation called Give a Little to facilitate card giving. You can find out more at: www.givealittle.co.uk

Please just bring your card to church with you when you come to a service.

Contributing to TLC Church by Online Donation

We use an organisation called Give a Little to handle online giving. You can find out more at: www.givealittle.co.uk

Just go to our website: www.tlcchurch.co.uk, where there is a donation link on the homepage.

Contributing to TLC Church by Direct Debit

We use an organisation called Parish Giving Scheme to handle giving by Direct Debit. You can find out more at: www.parishgivingscheme.org.uk

The easiest way to set-up a Direct Debit is to call PGS between 9am – 5pm on their dedicated phone line 0333 002 1271.

You'll need our parish details:

Parish name: Takeley with Little Canfield, Parish code: 080608527,

Village: Takeley, Diocese: Chelmsford.

If you'd prefer to complete a paper form, please let one of us know.

Contributing to TLC Church by Standing Order

You can set-up or amend a Standing Order using online banking if you have it, or by contacting your bank directly. Our bank details are:

Santander Bank

Account name: TLC Church

Sort Code: 09-01-29

Account number: 16013946

If you'd prefer to complete a paper form, please let one of us know.

Seen in a West Country church:

Whenever I see a little church,

I always pay a visit.

So when at last I'm carried in,

the Lord won't ask 'Who is it?'



Snowdrops in Takeley churchyard

Photo credit: The Hundred Parishes Society

Both Holy Trinity in Takeley and All Saints in Little Canfield are now open to visitors, All Saints all the time, and Holy Trinity 9am—5pm.



Dates for your Diary from April 2024 onwards

Saturday 6th April 2024, 10am: Prayer Share at All Saints Church, Little Canfield CM6 1SU

Saturday 6th April, 8:30pm: Singer Terry Lee Travis performing rock, pop, country and classic hits at Takeley Social and Sports Club, Dunmow Road CM22 6QJ.

Sunday 7th April, 9:30am: Morning Prayer at All Saints Church, Little Canfield CM6 1SU

Tues 9th April, in celebration of 60 years of Takeley Ladies Circle—day trip to Carriages Tea Rooms, Huntingdon, Cambridgeshire.

Saturday 13th April, 9am: Informal Morning Prayer at Holy Trinity Church, Takeley CM22 6QL

Tuesday 16th April, 2-4pm, Takeley Ladies' Circle, tea and chat at the Old School Community Centre, Takeley CM22 6SB

Saturday 13th April, 8:30pm: Living the Dream, a 5-piece band performing hits from the 50's, 60's,70's and country classics at Takeley Social and Sports Club, Dunmow Road CM22 6QJ

Sunday 14th April, 9:30am, Holy Communion at Holy Trinity Church, Takeley CM22 6QL

Saturday 20th April, 9:30 am: Deanery Walk for April. Meet at St Mary's Church, Church Street, Church End, Great Dunmow CM6 2AE at 09: 30 am. (As usual when a Deanery Walk is taking place, there is no service of Informal Morning Prayer in Holy Trinity on that date .)

Saturday 20th April, 10am-12 noon, coffee morning at Helen Rollason Can-

cer Charity Mid Essex Support Centre, Hatfield Peveler CM3 2EH

Saturday 20th April, 10am-12 noon, coffee morning at Takeley Social and Sports Club CM22 6QJ with bric-a-brac and cake stalls in aid of TSSC funds.

Saturday 20th April, 6:30pm for 7pm, Quiz Night organised by Rotary in Takeley at All Saints Church, Little Canfield CM6 1SU



Saturday 20th April, 8:30pm: Singer and guitarist Ian Jordan performing at Takeley Social and Sports Club, Dunmow Road CM22 6QJ

Sunday 21st April, 9:30am: Holy Communion at All Saints Church, Little Canfield CM6 1SU

Sunday 21st April, 11am-5pm, Open Day at the Gardens of Easton Lodge CM6 2BB, [What3Words](#) [///Stocky.Bulletins.Opponent](#)

Wednesday 24th April, 1:30pm for 2pm, talk by Howard Slater on the music of the 1940s and 50s at Foakes Hall, Dunmow CM6 1DG

THURS April 25th 2024 (Yes, a THURSDAY!), Rodings Friendship Club: Day Trip - Burtey Fen Collection. Concert starting at 2.30pm. Stopping at Spalding Shopping Village in the morning for lunch.

Saturday 27th April, 9am: Informal Morning Prayer at Holy Trinity Church, Takeley CM22 6QL

Saturday 27th April, 6:30pm start: Family Night with Solo Disco at Takeley Social and Sports Club, Dunmow Road CM22 6QJ. Non-members £5 per family.

Sunday 28th April, 9:30am, Family Service at Holy Trinity Church, Takeley CM22 6QL

Tuesday 30th April, 2-4pm Takeley Ladies Circle film show at the Old School Community Centre, Takeley CM22 6SB

Looking further ahead...

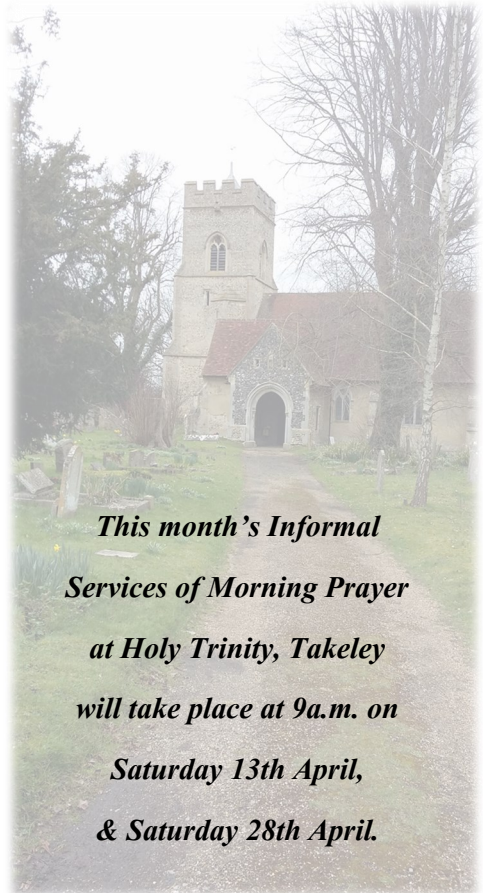
Saturday 11th May, 9am-12 noon, drop off your donations to the Helen Rollason Cancer Charity at their Mid-Essex Support Centre, The Street, Hatfield Peverel, Essex CM3 2EH. Car park at rear.

Saturday May 11th 2024, 7:30pm – 10:30pm at High Easter Village Hall: singer “Talia” and her Electric Accordion. Contact Brian Hockley 01279 871181

Sunday 12th May 2024 , all day: Helen Rollason Cancer Charity “Ride For Helen” cycle ride. Choice of routes of different lengths, starting and ending at The Crix, Hatfield Peverel. Register at the charity’s website [here](https://www.helenrollason.org.uk/event/ride-for-helen-essex/).
<https://www.helenrollason.org.uk/event/ride-for-helen-essex/>

Tuesday 14th May, 2-4pm, Takeley Ladies Circle talk on the history of Easton Lodge at the Old School Community Centre, Takeley, CM22 6SB

Saturday 18th May, 9:30 am: Deanery Walk from Birchanger Church.



This month’s Informal Services of Morning Prayer at Holy Trinity, Takeley will take place at 9a.m. on Saturday 13th April, & Saturday 28th April.



Pixies Pre-School

OPEN FROM MARCH 2021

Monday to Friday. 9am-3pm.

Term time only.

Full and half day sessions available.

Two to Four years old.

Funding accepted for those eligible.

Fully qualified staff.

W: www.pixiespreschool.co.uk

E: info@pixiespreschool.co.uk

T: 07515 894702

Ofsted Registered: 2618078

Saturday 18th May, 10am-12 noon, coffee morning at Helen Rollason Cancer Charity Mid Essex Support Centre, Hatfield Peverel CM3 2EH

Wednesday May 22nd 2024 - Rodings Friendship Club: Day Trip - Sussex & Ashdown Forest Tour.

Tuesday 28th May, 2-4pm, Takeley Ladies Circle Bingo at the Old School Community Centre, CM22 6SB

Saturday 8th June, 9am-12 noon, drop off your donations to the Helen Rollason Cancer Charity at their Mid-Essex Support Centre, The Street, Hatfield Peverel, Essex CM3 2EH. Car park at rear.

Tuesday 11th June, 2-4pm, Takeley Ladies Circle, bowling at the Old School Community Centre, CM22 6SB

Saturday 15th June, 9:30 am: Deanery Walk from Broxted Church.

Saturday 15th June, 10am-12 noon, coffee morning at Helen Rollason Cancer Charity Mid Essex Support Centre, Hatfield Peverel CM3 2EH

Sunday 23rd June, 12—5pm, Takeley and Canfield Open Gardens organised by Rotary in Takeley. Contact verseyjennifer@gmail.com or phone 07984 619348 for further information.

Tuesday 25th June, 2 –4pm, Takeley Ladies' Circle, talk about Medical Detection Dogs at the Old School Community Centre CM22 6SB

Wed June 26th 2024 - Rodings Friendship Club: Strawberry Teas at Lead-en Roding Village Hall.

Tuesday 9th July, 2-4pm, Takeley Ladies' Circle, "My Life with Flowers" talk and demonstration at the Old School Community Centre CM22 6SB

Saturday 13th July, 9am-12 noon, drop off your donations to the Helen Rollason Cancer Charity at their Mid-Essex Support Centre, The Street, Hatfield Peverel, Essex CM3 2EH. Car park at rear.

Saturday 20th July, 9:30 am: Deanery Walk from Beauchamp Roding Church.

Saturday 20th July, 10am-12 noon, coffee morning at Helen Rollason Cancer Charity Mid Essex Support Centre, Hatfield Peverel CM3 2EH

Wed July 24th 2024 - Rodings Friendship Club: Day Trip - Bekonscot Model Village & Trains in Beaconsfield.

Saturday 17th August, 9:30 am: Deanery Walk from Stebbing Church.

Saturday 17th August, 10am-12 noon, coffee morning at Helen Rollason Cancer Charity Mid Essex Support Centre, Hatfield Peverel CM3 2EH



Wed Aug 28th 2024 - Rodings Friendship Club: August Lunch at the Black Bull, Fyfield.

Saturday 14th September, 9am-12 noon, drop off your donations to the Helen Rollason Cancer Charity at their Mid-Essex Support Centre, The Street, Hatfield Peverel, Essex CM3 2EH. Car park at rear.

Saturday 21st September, 9:30 am: Deanery Walk from Great Salving Church.

Saturday 21st September, 10am-12 noon, coffee morning at Helen Rollason Cancer Charity Mid Essex Support Centre, Hatfield Peverel CM3 2EH

Wed Sept 25th 2024 - Rodings Friendship Club: Day Trip - Tea in the Train Carriages at Fen Drayton. Stopping at Cambridge in the morning for lunch.

Saturday 19th October, 9:30 am: Deanery Walk from ALL SAINTS CHURCH, LITTLE CANFIELD

Saturday 19th October, 10am-12 noon, coffee morning at Helen Rollason Cancer Charity Mid Essex Support Centre, Hatfield Peverel CM3 2EH

Sunday 20th October, 4:30pm: Deanery Service at High Easter

Wed Oct 23rd 2024 - Rodings Friendship Club: Singer Alan Reynolds, at Leaden Roding Village Hall.

Wed Nov 27th 2024, 2pm - Rodings Friendship Club: Fun Quiz organised by Jane Malyon at Leaden Roding Village Hall. Change of Programme: Talk



Kelli-Anne Hardy B.Sc (Hons) MRCPod
Podiatry / Chiropody Services
"For all your foot health needs"



- ▶ Home visits offering:
- ▶ Toe nail cutting service
- ▶ Corns / Callosities
- ▶ Thickened / In-growing toe nails / Nail surgery
- ▶ Fungal infections of the nails and skin
- ▶ Diabetes related foot problems and assessments
- ▶ Fully qualified podiatrist with a degree in podiatric medicine
- ▶ Fully insured, hpcp registered and a member of The Royal Collage of Podiatry.
- ▶ For any enquiries please contact 07307 780078
- ▶ Facebook, Kelli-Anne Podiatry @ kapodiatry



CH35050, POM-A, POM-S

by Wiltshire Farm Foods at Leaden Roding Village Hall.

Mon Dec 2nd 2024 - Rodings Friendship Club: Christmas Lunch at the Black Bull, Fyfield.

Sunday 15th December 2024, Rodings Showtime trip to Cliff's Pavilion to see the 5pm performance of the pantomime "Jack and the Beanstalk". (Note the change in the panto from "Beauty and the Beast" as previously advertised.)

Prayer Share!

**At 10 a.m. on the first Saturday
of every month, at All Saints
Church, Little Canfield.**

**An informal meeting where you can
bring a favourite prayer or verse to
share. This month's Prayer Share
will be on Saturday 6th April 2024.**



April 2024

Find Us!

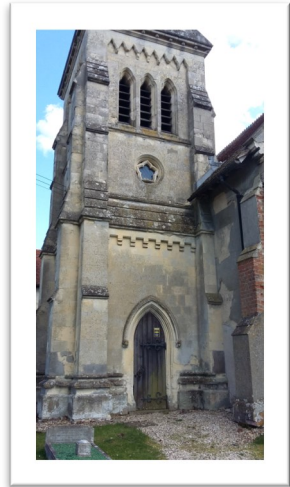
Holy Trinity Church, Takeley is situated at the end of Church Lane, turning north off the B1256 just west of Takeley village. Postcode:



CM22 6QL. What3words for the Holy Trinity car park:

///optimally.goggles.invite

All Saints Church, Little Canfield is situated at the end of Church Lane (a different Church Lane from the Takeley one!), turning south off the B1256 between Takeley and Dunmow. Postcode: **CM6 1SU**. What3words for the All Saints car park:



///hardly.headless.improves



GETTING IN TOUCH

For enquiries about baptisms, weddings, funerals, visits, church groups & activities, please contact our **Church Administrator, Lisa Chambers**, at:
admin@tlcchurch.co.uk, or telephone: 07766 444873

The **Reverend Dr Colin Fairweather** can be contacted on:
revdrcolinfairweather@gmail.com
01279 816721

The **Reverend Helen Flack** can be contacted on:
revhelenstn@gmail.com
01371 876145

Hugh Mascetti (Lay Minister) can be contacted on:
hughm@tlcchurch.co.uk
01279 871606

CHURCHWARDENS:

For Holy Trinity, Takeley: William Sadler 01279 873409
For All Saints, Little Canfield: David Daykin 01279 870 743



"Police? This is St Mary's Ladies' Knitting & Vigilante Circle. We've detained two gents trying to nick the church silver."